

# Part 150 Update

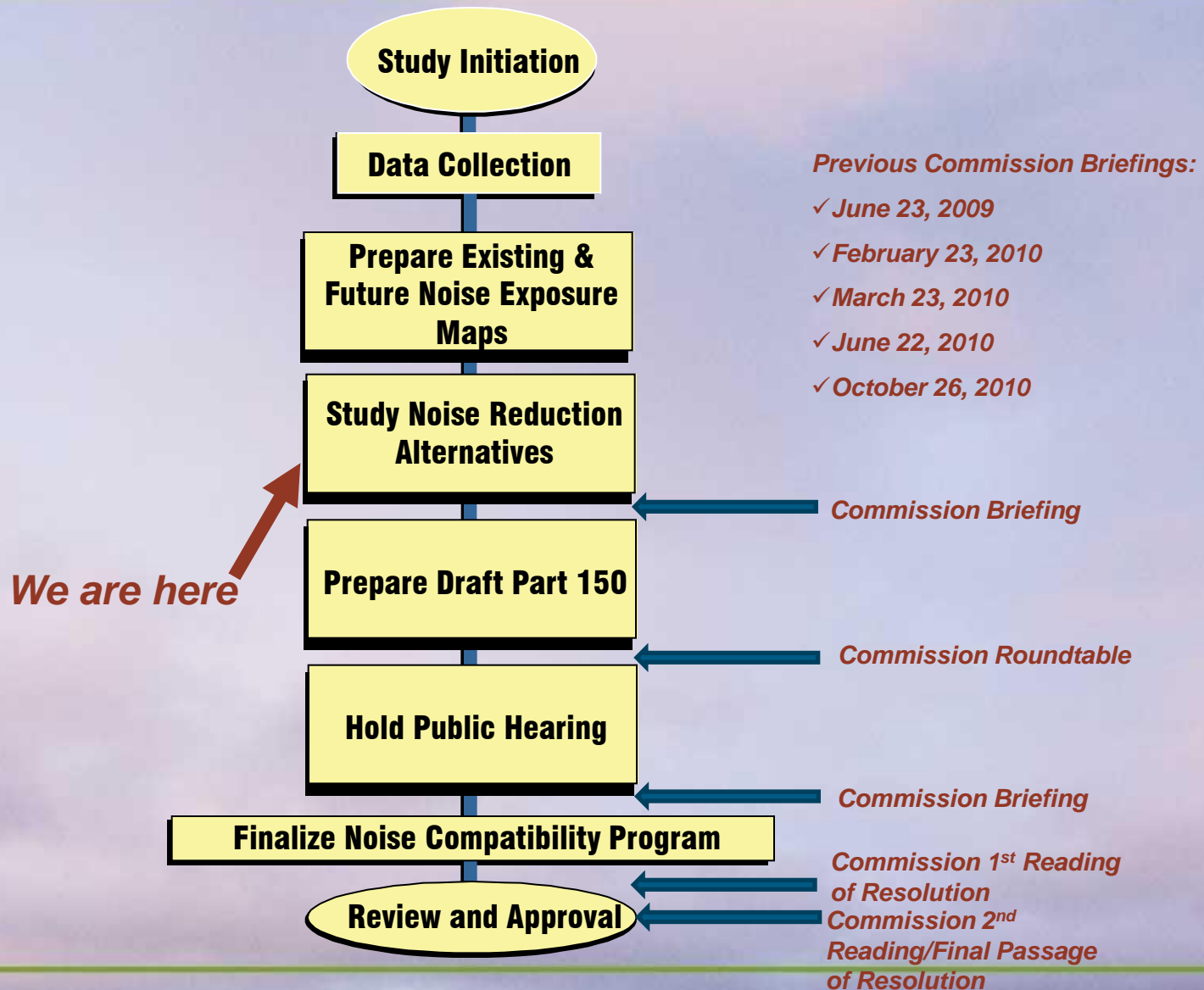
June 28, 2011



Port   
of Seattle®  
Where a sustainable world is headed.™



# Part 150 Process



# Commission & FAA Approval Process

- Public hearing and comment period
- Port Commission meetings to adopt resolution approving recommendations
- Commission-approved recommendations forwarded to FAA for approval

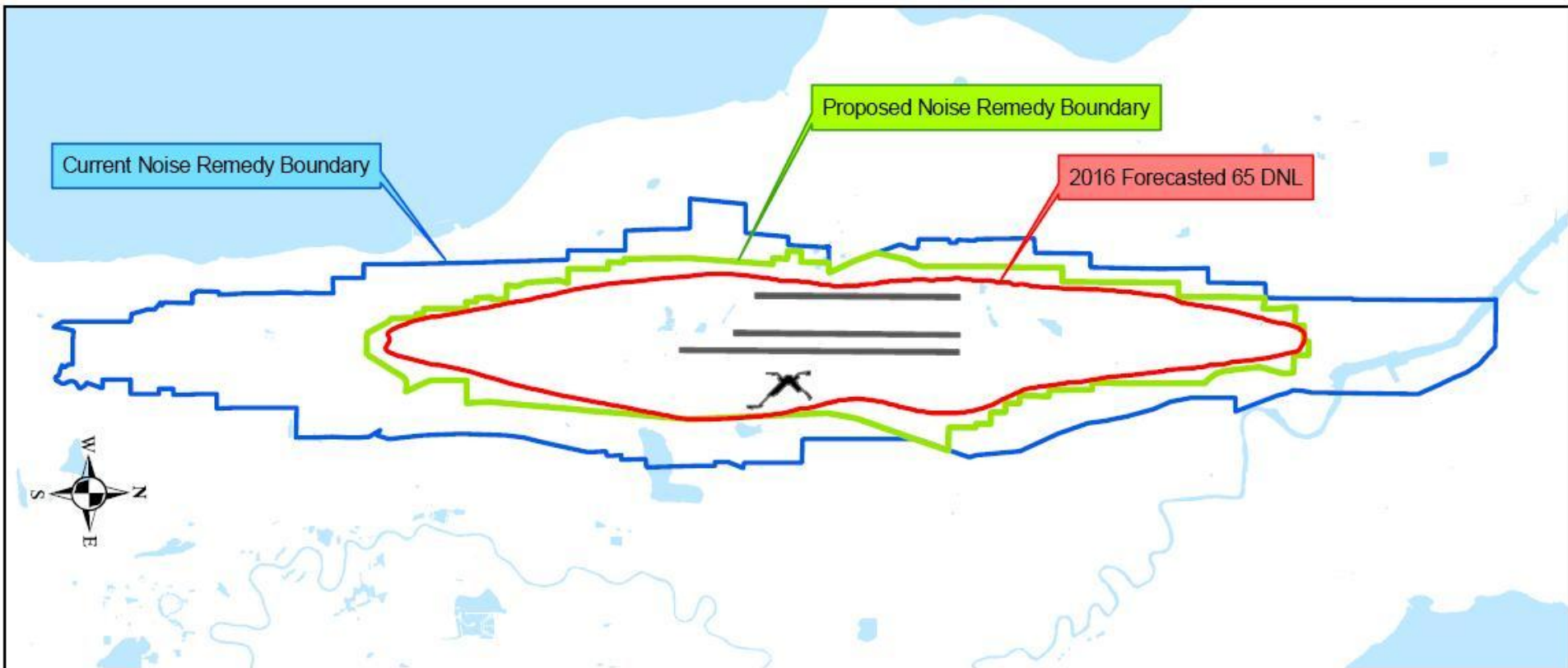
# Information for Commission Decisions

- Benefits of recommended new programs; public response
- Estimated costs
- Responsible parties
- Schedule



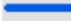
# Smaller noise contours = smaller program boundaries

- FAA funding eligibility requires periodic updating of contours & program boundary
- Existing boundary based on contours reflective of more and louder aircraft than existing & projected fleet
- Proposed program boundary based on projected 5 year forecasted contour
- Sound insulation offers made to all eligible single-family homes within existing program boundary

# Updated Noise Program Boundary Based on Forecasted 2016 Contour



## Legend

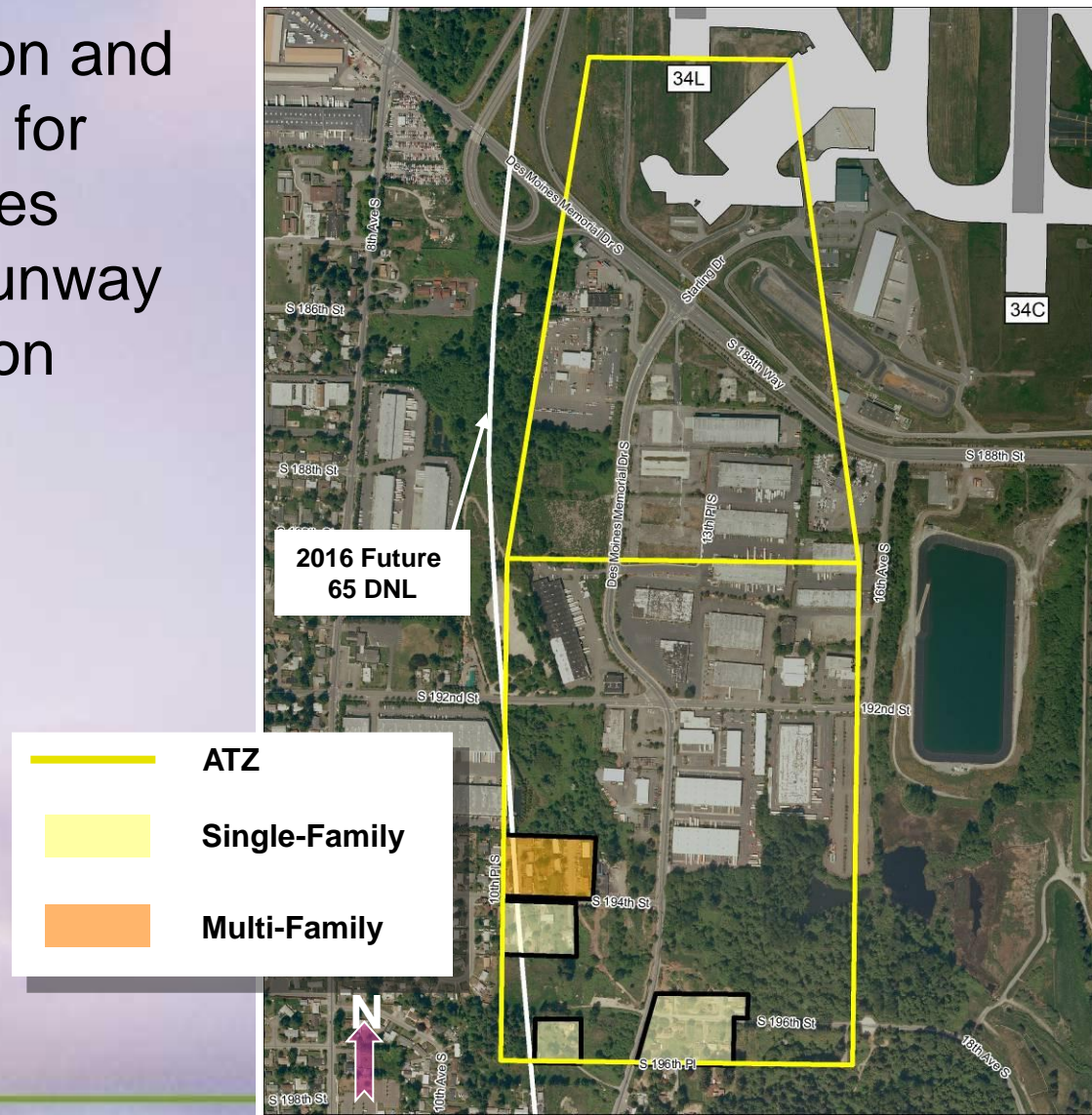
-  2016 forecasted 65 DNL
-  DRAFT Proposed Remedy Boundary
-  Noise Remedy Boundary

# Options Under Review

- **Residential sound Insulation within new boundary**
  - Single-family homes,
  - Condominiums
  - Pilot project for apartment buildings
  - Air conditioning in new insulation work
- **Avigation Easements for individual mobile homes on private land**
- **Church sound insulation feasibility study**
- **Partner with local jurisdictions on long-term, land use and noise compatibility planning**

# South Approach Transition Zone

- Voluntary acquisition and relocation services for residential properties south of the third runway (Approach Transition Zone)





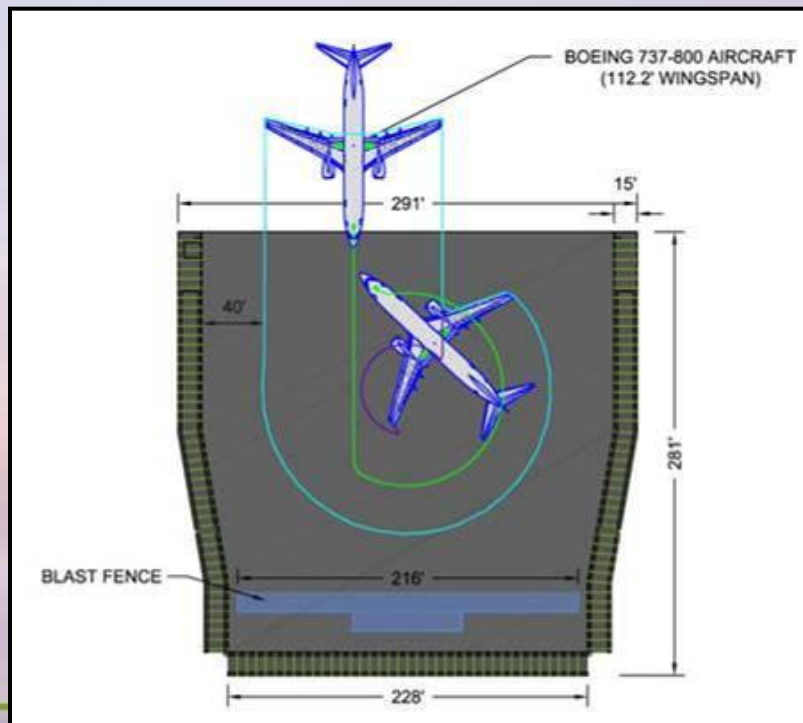
# Hush House

- Hush House Facts:
  - A Hush House is a term used for an enclosed, noise suppressed, aircraft engine test facility
  - Typically consists of 3 walls that deflect jet blast
  - Hush House will typically reduce noise by 15-20 dB
  - Typical Hush Houses cost \$3 - \$6 million (structure only)
  - Site factors determine exact costs

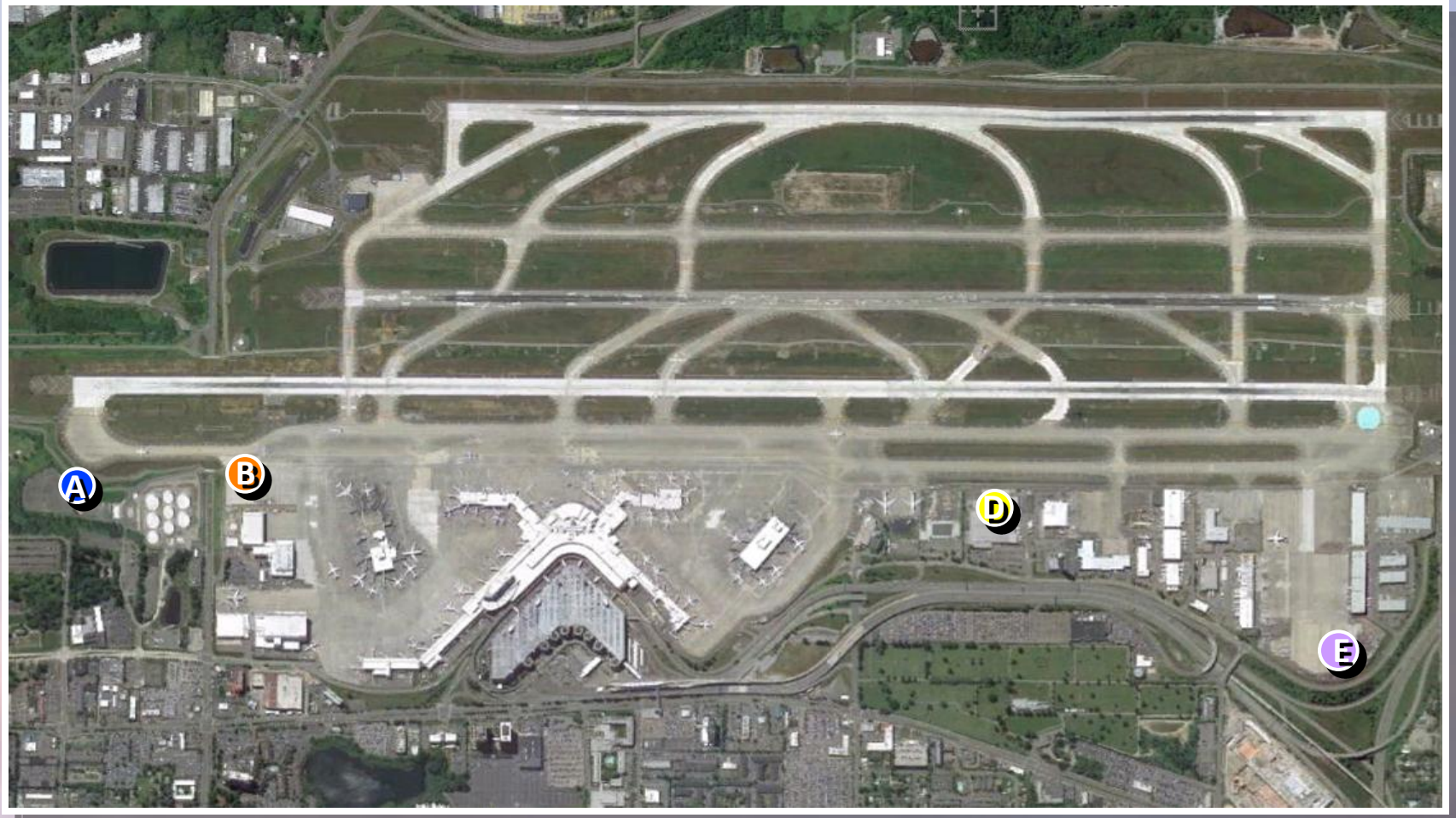


# Hush House Evaluation

- Facility
  - Fixed orientation with the wind
  - SEA-TAC facility would need to open to the south so that aircraft would face the south during run up
  - Popular design (Portland, Chicago, Indianapolis...)



# Hush House Evaluation



# Options Under Review

- **Noise Monitoring System**
  - Evaluating the need to add terminals
  - Evaluating new reporting techniques
- **Fly Quiet Program**
  - Identifying possible enhancements
  - Expanding the program to include ATCT reporting of operational modes for comparison to runway use goals
- **Updating the Noise Exposure Maps as necessary**

# Update on Public Outreach

## □ Last Public Workshop:

- *Saturday, April 9, 2011*
- SEA-TAC Airport – Arrivals Hall
- 10:00 am – 4:00 pm
- Open house format with topic-based stations
- Over 75 people attended
- Airfield tours were offered

## □ Next Public Workshop:

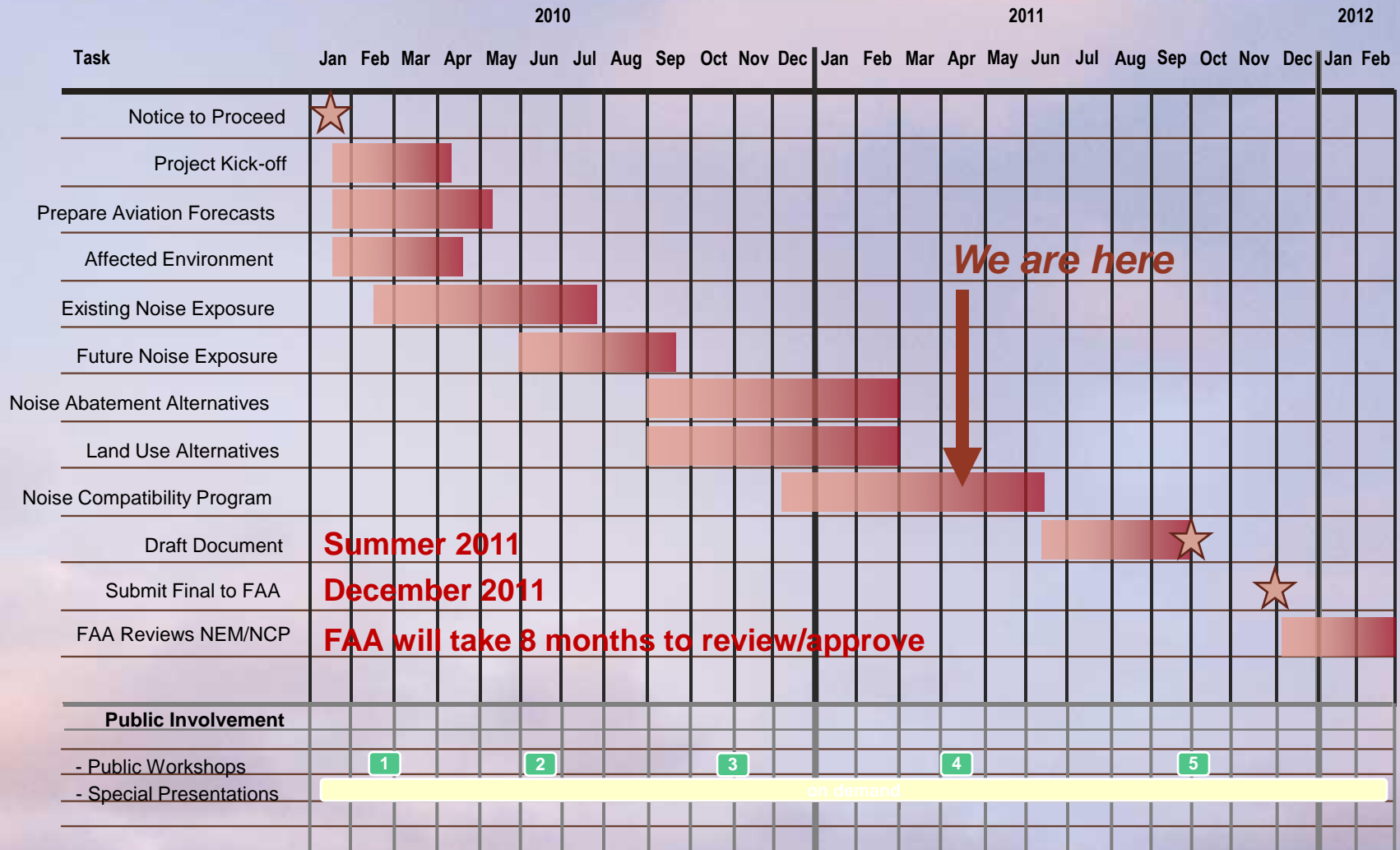
- Late summer/fall 2011
- Public Hearing



## □ Limited-English Speaking Outreach:

- Hired interpretive services for written and oral communication
- 4 languages
  - Spanish
  - Vietnamese
  - Somali
  - Cambodian
- Publicized phone number for those in need of interpretive services
- Distributed flyers to places or organizations that have contact with limited-English speakers
- Part 150 website can be converted into other languages
- Will continue to monitor the response to see if additional services are needed

# Part 150 - Schedule



Questions?